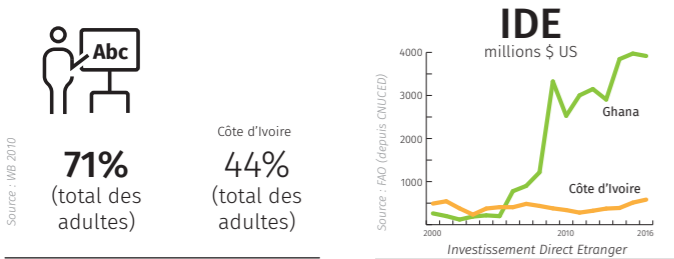
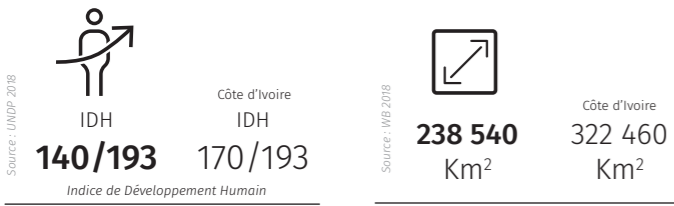
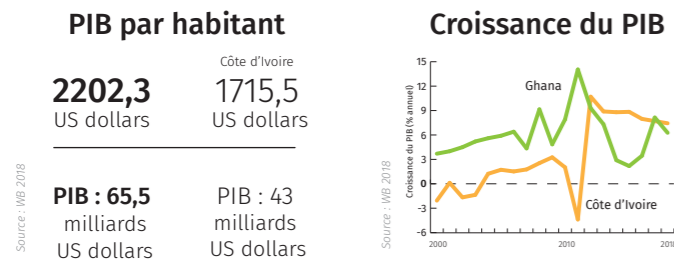


# REPÈRES

## Carte d'identité du Ghana



## Ghana et Côte d'Ivoire, faux jumeaux ?



### Situation géographique

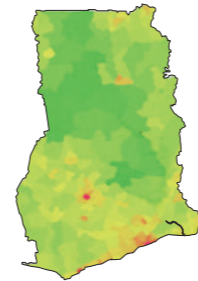


### Principales zones agro-écologiques

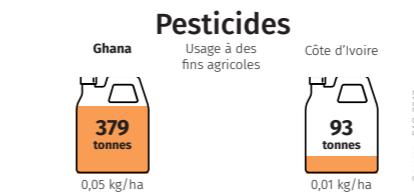
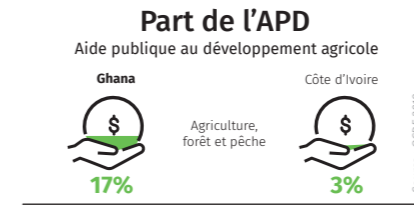
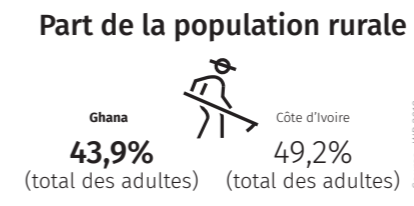
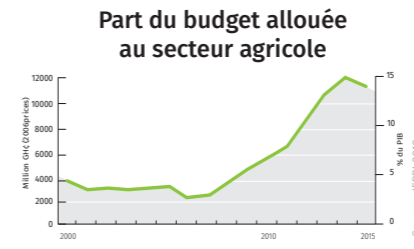
- Savane côtière
- Savane guinéenne
- Forêt tropicale
- Forêt de feuillus
- Savane soudanaise
- Zone de transition

- Capitale
- Villes principales

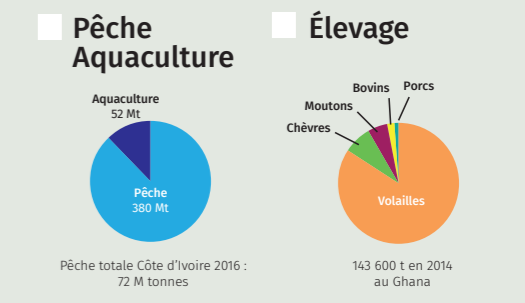
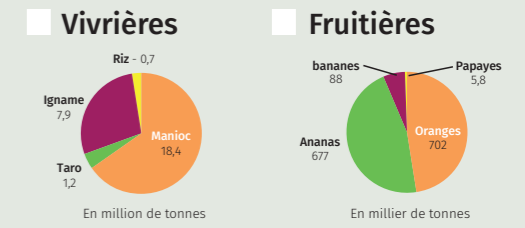
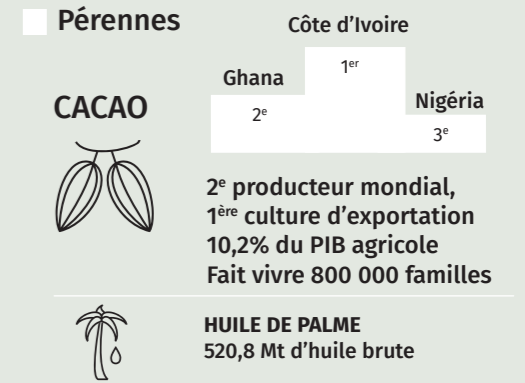
### Densité de population



## Carte d'identité agricole du Ghana



## UNE PLACE IMPORTANTE DES CULTURES D'EXPORTATION



## De l'indépendance à nos jours : stabilité politique et transformations agricoles

